



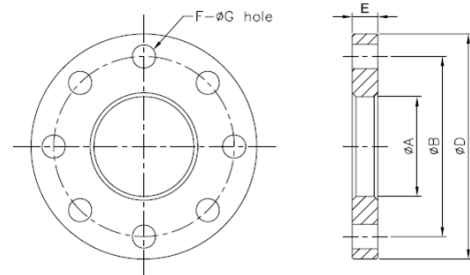
RTM-090 Magnetic Bearing Centrifugal Compressor

Specifications

Model		RTM-090		
Refrigerant		R134a, 1234ZE, R513A		
Nominal cooling capacity		USRT(TONS)		
		400~450		
Compressor	Type	Two-stage compression		
	Frequency	Hz		
		130 to 225		
Axial Guide Vane Control	Inlet Guide Vanes	20~100% continuous		
	Voltage	220 VDC		
	Input Signal	4~20mA - DC: 1~5V - DC		
	Output Signal	4~20mA - DC		
Motor	Type	3 Phase, 2 Pole, Permanent magnet		
	Starting	VFD		
	Voltage	V		
			380~460±5%	
	Insulation	Class H		
Protection	PT100*6			
Transmission	Type	Direct-driven		
	Lubrication	Oil free		
Hydrostatic pressure test		PSI (kg/cm ² g)		
		321 PSI (22 kg/cm ² g)		
Refrigerant Heater		Watt		
		300 W UL Certified 220 V		
Dimension (LxWxH) Compressor		FT		
		4.26 X 2.62 x 2.30		
Weight (Compressor) 1 skid		LB		
		2315 Compressor (skid - 36 x 59 x 43) Crated weight 2578		
Shipping Weight (Components) 1 skid		LB		
		(skid 53 X 50 X 29) Crated weight 641		

Suction/discharge/economizer flange size

Position	Size	A		B	D	E	F	G	Piping thick.	
		(JIS)	(GB)							
RTM-090	Suction	8"	8.58"	8.72"	12"	13.78"	1.18"	0.47"	0.98"	0.43"
	Discharge	6"	6.57"	6.71"	10.24"	12"	1.10"	0.47"	0.98"	0.41"
	Mid.-press. (Eco.)	2 1/2"	3.05"	3.05"	5.51"	6.89"	0.78"	0.31"	0.75"	0.27"
Remarks		*Material- standard JIS 284.47 pounds per square inch steel unit: inches								
		*Thickness must be equal to the standard or larger								



Check Valve Size

To avoid the reverse rotation caused by emergency shutdown and protect active magnetic bearing (AMB), under high-speed compressing, installation of a check valve installed in the discharge side is necessary.

Size	A	B	C	E
6"	5.90"	8.75"	4.75"	3.75"
8"	7.87"	11"	6.44"	4.95"
Remark	*Operating temp. : -260 °C~810 °C			
	Hydraulic pressure testing: 449.46 pounds per square inch (API-598)			
	*Material - ASTM351 GR CF8M stainless steel. Pressure level : ASME 150			
*The check valve is of wafer plate valve. Use ANSI 150 standard flange				